

# ZAPATA SE QUEDA

Musique : Lila Downs

Transcription : F. Robert

4

son las tres de la ma - na - na di -  
 cen que pe-na san-ti - to ba - ji-to yo oi-go qu di-ce ca - mi-na-le des-pa-ci - to ay ma-mà ca-  
 mi-na-le des-pa-ci - to mi sue-no me di-ce no val-las mis pier-nas me di-cen tan - ti-to y  
 cuan-do ya me doy cuen - ta ca-ram - ba me mue-vo po-co'a po-qui - to ay ma-ma me  
 mue-vo po-co'a po-qui — to toum toum toum toum toum toum toum toum toum toum  
 toum toum toum toum toum toum toum toum en mi men — te se'o ye  
 que me di-ce'a si i — i en mi men — te se'o ye que me di ce'a si i i —  
 — por la som-bra de la sel - va se escu-cho'un dis - pa - ro y cal-lo'un gal-lo  
 ne - gro por la cal-le de mi - la - gro si tu di-ces que me quie-res con el to-do al  
 to-do y te vas tu con - mi-go le-van-ta-mos pol-vo ay ay ay ay ay  
 con - ti - go hay se - re - no pa la ay ay ay ay ay con - ti - go hay

## ZAPATA SE QUEDA

2  
39

ni ru da mi des - ti - no — pa pa la pa pa la pa pa pa

43



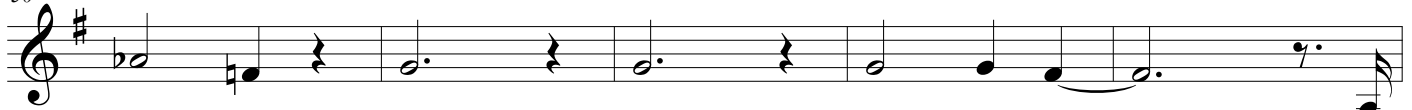
pa pa la pa pa la pa pa — la pa pa la pa pa la

46



pa pa pa pa pa la pa pa la pa pa — la a a

50



a a a a a a a — mis

55



pier-nas me di-cen tan - ti - to y cuan-do ya me doy cuen - ta ca-ram - ba me

57



mue-vo po-co'a po-qui - to ay ma-ma me mue-vo po-co'a po-qui — to

59



toum toum toum toum toum toum toum toum toum toum toum toum

62



toum toum toum toum en mi men — te se'o ye que me di-ce'a si i — i

65



en mi men — te se'o ye que me di ce'a si i i — por la som-bra de la

68



sel - va se escu-cho'un dis - pa - ro y cal-lo'un gal-lo ne - gro por la cal-le de mi-

71



la - gro si tu di-ces que me quie-res con el to-do al to - do y te vas tu con -

74



- mi-go le-van-ta-mos pol-vo ay ay ay ay ay con - ti - go hay se - re - no pa

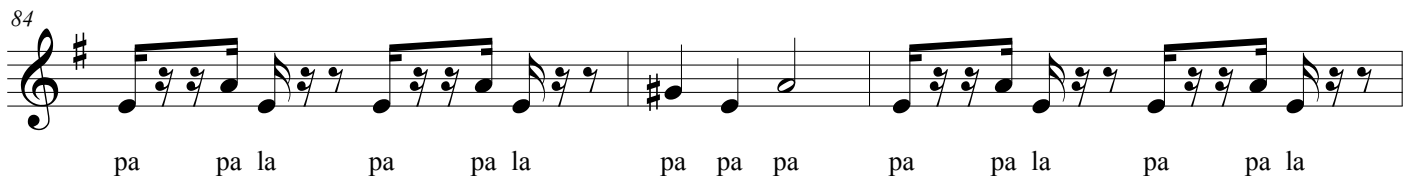
79



la ay ay ay ay ay con - ti - go hay ni ru da mi des - ti - no —

Detailed description: This musical staff covers measures 79 to 83. It begins with a treble clef and a key signature of one sharp (F#). The melody starts with a half note 'la', followed by a quarter rest, then a quarter note 'ay' and an eighth-note triplet 'ay ay ay'. This is followed by a quarter note 'ay', a quarter rest, and a quarter note 'ay'. The phrase 'con - ti - go hay' is set to a quarter note 'con', a quarter note 'ti', a quarter note 'go', and a quarter note 'hay'. The final phrase 'ni ru da mi des - ti - no' is set to a quarter note 'ni', a quarter note 'ru', a quarter note 'da', a quarter note 'mi', a quarter note 'des', a quarter note 'ti', and a half note 'no' with a fermata.

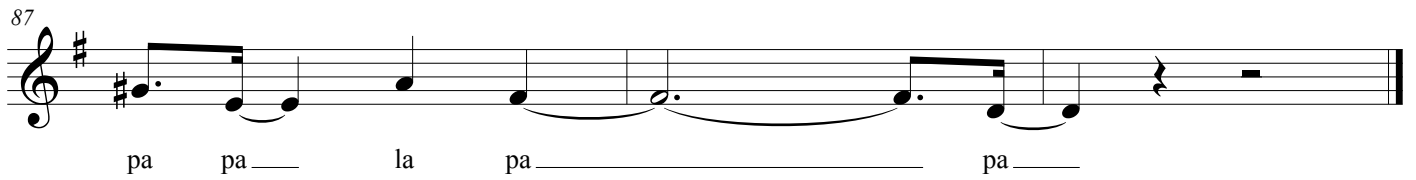
84



pa pa la pa pa la pa pa pa pa pa la pa pa la

Detailed description: This musical staff covers measures 84 to 86. It continues with the same treble clef and key signature. The melody features a rhythmic pattern of eighth notes: 'pa' (quarter), 'pa' (quarter), 'la' (quarter), 'pa' (quarter), 'pa' (quarter), 'la' (quarter), 'pa' (quarter), 'pa' (quarter), 'pa' (quarter), 'pa' (quarter), 'la' (quarter), 'pa' (quarter), 'pa' (quarter), 'la' (quarter). The key signature changes to two sharps (F# and C#) at the beginning of measure 85.

87



pa pa — la pa — pa —

Detailed description: This musical staff covers measures 87 to 89. It continues with the same treble clef and key signature. The melody consists of a half note 'pa', a half note 'pa' with a fermata, a quarter note 'la', a quarter note 'pa' with a fermata, and a half note 'pa' with a fermata. The piece concludes with a double bar line.